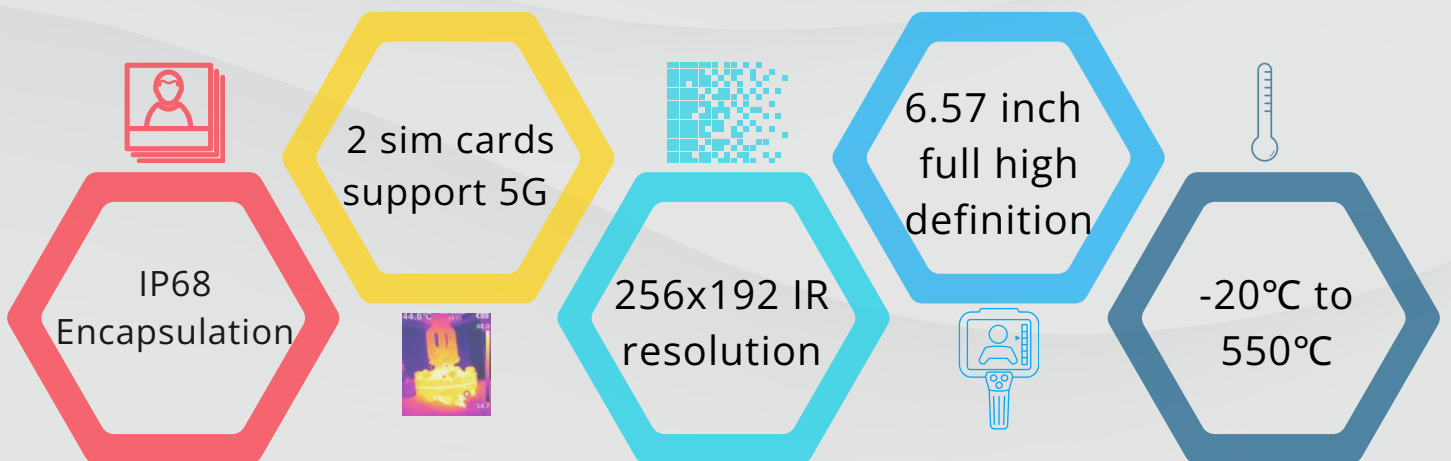


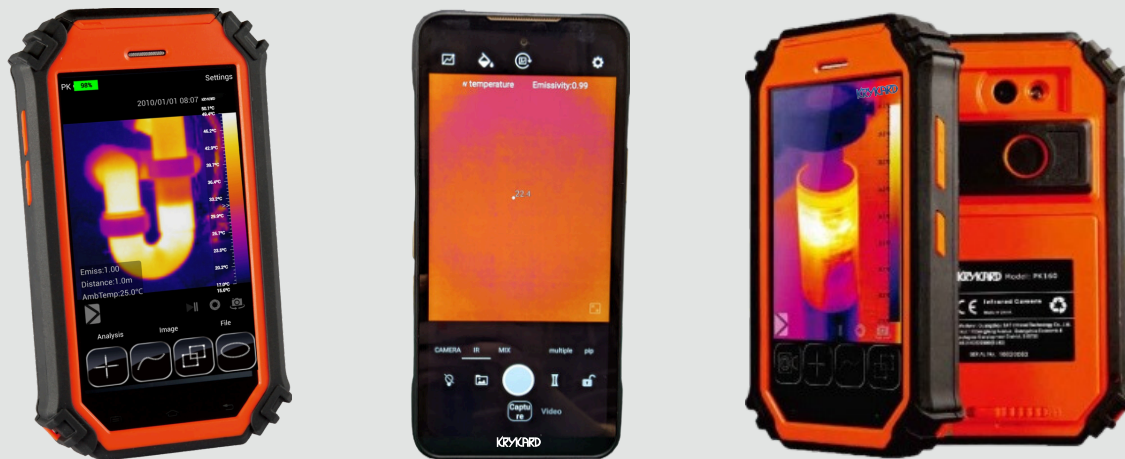
M - 250

SMART THERMAL IMAGING CAMERA

Salient Features:

- Smart Device Platform
- Open Android Platform
- Easy-to-Use Device
- 256x192 IR Detector
- 48MP Digital Camera
- Temperature Range of -20°C to +550°C





Model	M-250
Infrared	
Detector type	UFPA
FOV	55.6°x 42°
Detector resolution	256x192
Pixel-pitch	12um
Image Presentation	
Image Mode	Visible/Fusion/Infrared
Flash	Support plus flash light
Image Storage	
SIM type	Two nono cards
Add in card type	Support micro TF
Temperature Measurement	
Measurement range	-20°C to +550°C
Measurement Accuracy	±2°C or 2% of readings
Protective Performance	
Encapsulation	IP68
Shock/Vibration Residents	25G
Physical Characteristic	
Size	81.5mmx170xmm (12+0.5) mm
Power System	
Battery Capacity	5000-5500 mAh support fast charge QC 4.0 (built in battery)
Features	
5G data connection	5G NRX51 modem (speed depends on mm WAVE or sub 6)
4G data connection	DL 2.0G bps CAT 20/UL 316 Mbps CTA 13
Fingerprint	Side fingerprint
GPS	Support Gps/Glonass/Galileo/Beidou+A-Gps
WLAN/WiFi	802.11 b/g/n 2.4 GHz, 802.11. a, 5 GHz, 802.11.ac, 5 GHz
Bluetooth	Bluetooth 5.1
Color	Black
CPU	Qualcomm Snapdragon SM 4350 (Snapdragon 480 5G platform)
CPU Frequency	Octa-core 2xGold(A76 based)+6x Silver(A55 based)
Operating system	Android 13 (support OTA system upgrade)
Memory Capacity	256GB eMMC+8GB DDR4
Screen display	6.57-inch FHD+(20:9 full screen), resolution 2520X1080
Rear Camera	48 (64) MP main camera +8MP depth of field. Support photo, video, panoramic photo, Auto focus, auto flash, HDK, continuous shooting, etc.